

# Architectural

906PL

Mortice Latch



ASSA ABLOY

## Application:

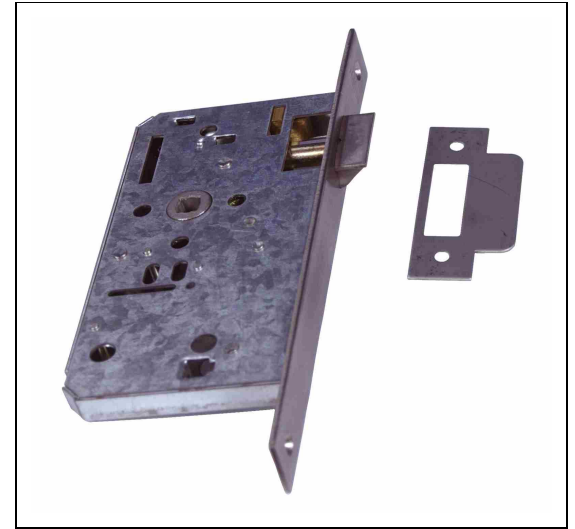
- For doors hinged on the left or right requiring lever handle operation

## Specification:

- Modular case range
- Handle operation from both sides of the door
- Easily reversible latchbolt
- Pierced to accept security rose fixings
- Heavy duty lever handle spring
- Available with radiused forend and strike upon request
- Case Size: 86mm
- Backset: 55mm
- Case: Galvanised Zinc
- Outer Forend: See finishes below
- Striking Plate: Finished to match outer forend
- Deadbolt: n/a
- Latch Bolt: Stainless steel
- Follower: Stainless steel, 8mm

## Finish:

- SS - Stainless Steel finish
- PS - Polished Stainless Steel finish
- PB - Polished Brass finish
- AB - Antique Brass finish
- SB - Satin Brass finish
- ABZ - Antique Bronze finish



## Standards:

- Tested to BS EN 12209 : 2003  

3	X	5	1	0	F	-	B	0	2	0
---	---	---	---	---	---	---	---	---	---	---
- BS EN 1634 Part 1 : 2000 4 hour fire resistance Warrington Fire Test Certificate No 145690



## Technical Design:

